



ECITL 2013 Zaragoza, SPAIN

*Logistics Research-Solutions-Innovation
through cooperation*

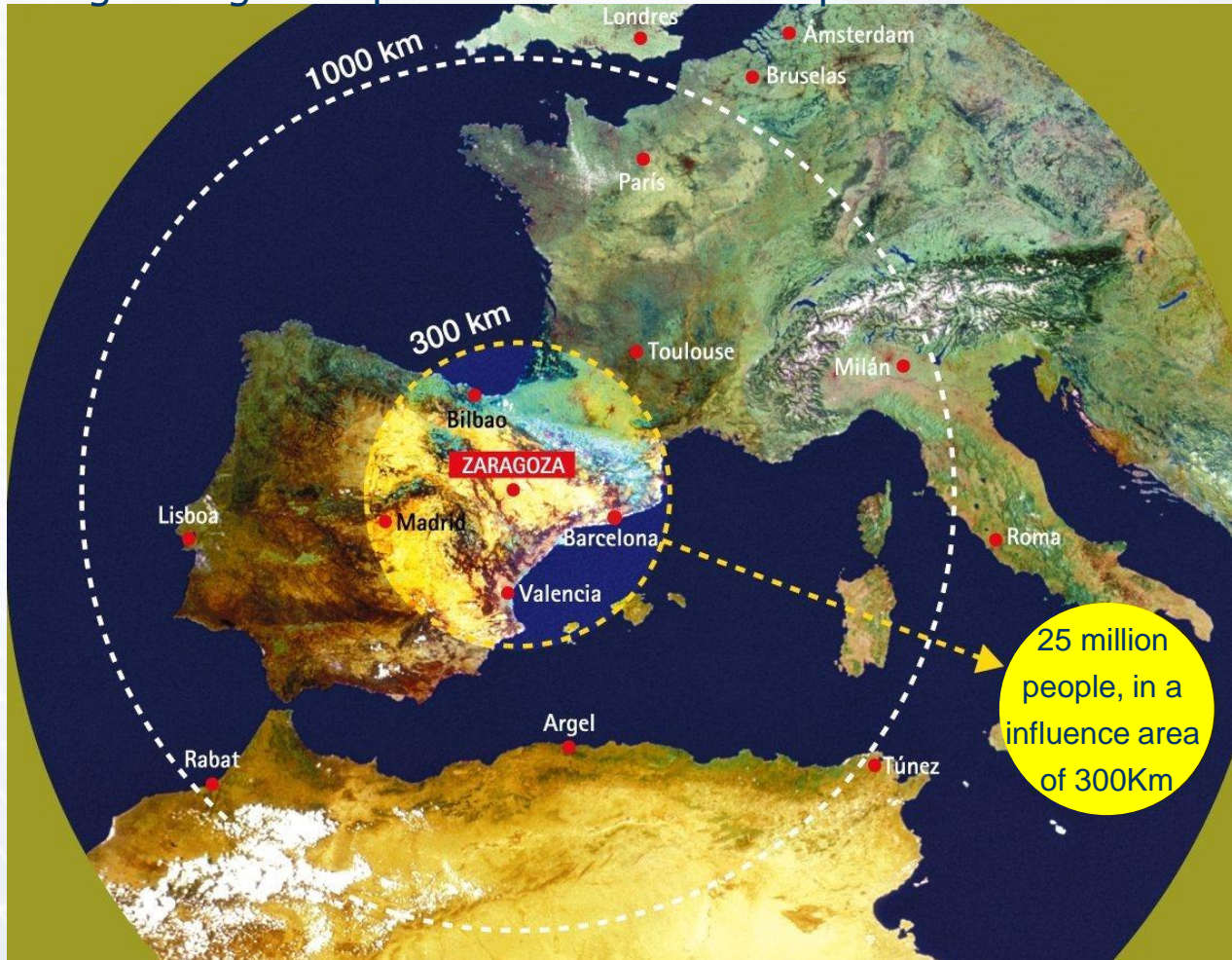
ITA - Aragon Institute of Technology
ZLC - Zaragoza Logistic Center

EUROPEAN CONFERENCE ON **ICT**
THE **4** TRANSPORT LOGISTICS ←←

Zaragoza & Logistics



Largest logistics premises on the European continent



KEYS FOR CREATION

Strategic geographic situation of Zaragoza

Public commitment

Impact of industrial outsourcing

Dependence on automotive sector



- Intermodal Transport Centre: road, rail, air, port
- Surface: 1,300 Ha. High quality/price ratio
- Training and Research: ZLC
- Knowledge transfer to industry through technology: ITA
- Growth of logistics activity :14.000 jobs, 4.000 millions investment

- ❑ Spanish Center of knowledge (*)
 - ❑ Generation, adaptation, transfer and diffusion of knowledge
 - ❑ Applying ICT to solve logistical problems
 - ❑ To develop a collaborative and sustainable logistics



INES
 Iniciativa Española de
 Software y Servicios



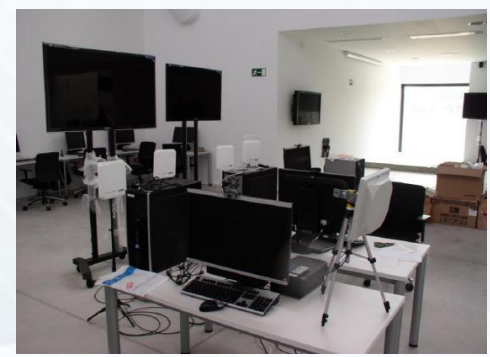
logistop →
 Plataforma Tecnológica en Logística Integral, Intermodalidad y Movilidad

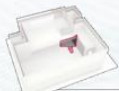


(*) Funded by Avanza Contenidos subprogramme: Knowledge Centres (REF TSI-070200-2008-76)

ITA - National Demonstrator Centre of ICT4Logistics: Our Lab

- Space to demonstrate how ICT can help to create solutions in the field of logistics.
- It will be as well our R&D Lab
- Opening in January 2013





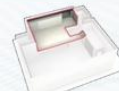
Facility: The national ICT4LOG Demo center (Point of Sale Module)

OBJECTIVES

- Technologies for the identification and collection of products with unique customer support: target small businesses vs. large supermarkets
- Innovative technologies at the point of sale pursuing more efficient logistics and procurement process more user friendly
- Technologies for real-time information about the existing stock of each product on the shelf
- Technologies to replace product according to claim efficiently

EQUIPMENT

- Point of Sale Terminal
- Debit system
- Smart shelving for automatic inventory control
- Mobile terminal assisted sales
- Vending telemetry systems



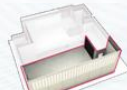
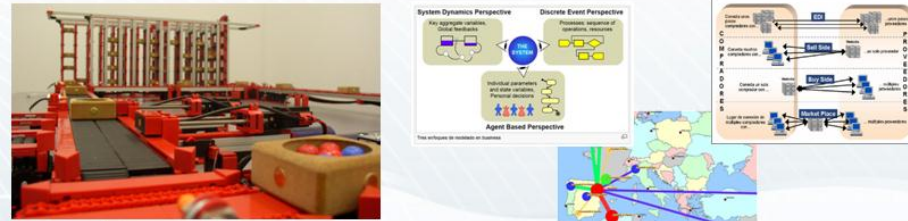
Facility: The national ICT4LOG Demo center (Supply Chain Module)

OBJECTIVES

- Show different identification technologies, control and monitoring of products in the SC
- Model, simulate and evaluate the interaction between ICT solutions and different configurations of dynamic and complex SC
- Show the exchange of information between agents of the SC (manufacturers, warehouse and customers)
- Show applications of electronic invoicing in the SC

EQUIPMENT

- Physical model with points of automatic identification, RFID, vision systems
- Virtual model: simulation and optimization system integrated with the physical model
- Automatic terminal identification for traceability in the SC
- E-commerce solutions: EDI, electronic invoicing, connections (FTP, web services, etc)



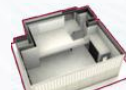
Facility: The national ICT4LOG Demo center (Smart Store Module)

OBJECTIVES

- Technologies for receiving, picking, shipping, storage and characterization methods of automatic goods
- Create a real operational scenario of an intelligent warehouse space featuring test different products and processes

EQUIPMENT

- Configurable automatic picking
- Manual preparation system orders: PTL and PTV
- Arch automatic reading of pallets using RFID and vision cameras
- Material handling system with integrated RFID reader homing
- Shelves with automatic stock management using sensors



Facility: The national ICT4LOG Demo center (Transport Module)

OBJECTIVES

- Technologies for route planning and fleet management
- Technologies for optimal filling of vehicles and license plate recognition
- Show geographic information systems analysis tools for locating and trip generation
- Technologies for simulation and analysis of traffic congestion

EQUIPMENT

- Fleet Management
- Board equipment and GPS
- License Plate Recognition Systems
- Geographic Information System
- Optimal Solutions for filling vehicle
- Solution for routing and transport real applications
- Tool for planning, forecasting and traffic simulation



ABOUT ZLC

Education & Research Institute established by the Government of Aragon in collaboration with MIT and the UZ. A model of cooperation between industry, government and academia.



Universidad
Zaragoza



MISSION

To create an international center of excellence for research and education in logistics and supply chain management that actively engages with industry and the public sector to develop and disseminate knowledge



ZLC. TO ACCOMPLISH THIS MISSION

Established partnership with MIT



Designated to lead the National Center of Excellence in Logistics and the Spanish Technology Platform on Logistics



Plataforma Tecnológica en Logística Integral, Intermodalidad y Movilidad

ZARAGOZA. LOGISTICS center





ITA ICT4LOGistics National Knowledge Center

elogistica@ita.es

www.ict4log.eu

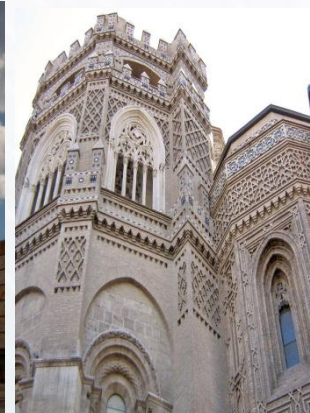
National Demonstrator Center

cpdlogistica@ita.es

www.ita.es/cpdlogistica

Zaragoza Logistics Center

www.zlc.edu.es



SEE YOU IN ZARAGOZA

Javier Val

ITA - Head of Marketing Unit

jval@ita.es

Fernando Liesa

ZLC - Knowledge Transfer Office Director

fliesa@zlc.edu.es

