



SMART-CM's contribution to Logistics efficiency & Supply Chain Security

Dr. G. Aifadopoulou
Project coordinator
Principal Researcher CERTH-HIT



5th ECITL 6-9 November 2012 Gothenburg Sweden



Project description

Basic Outcome

Provision of ICT solution for supporting the implementation of Green Trade Lane processes and enhancing Supply chain security and operational efficiency.

Basic Principles

- Real time Container security status provision (CSDs)
- Secured & technology unbiased management of business & security related information by a middleware platform for Global Trade Lanes Operation
- Chain visibility and chain efficiency management by combining real time & planned data
- Fulfilment of industry & customs requirements

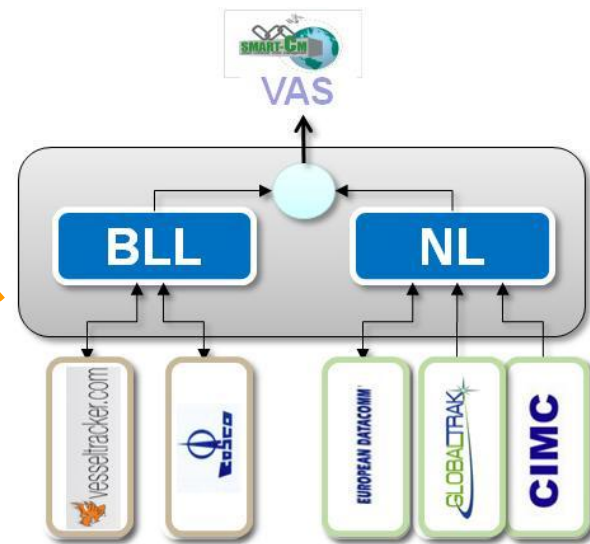
Testbed

Two global container transport demonstrators

1. Information gateway platform for business and security related container information.

- ❖ Platform connector to different info providing system
- ❖ Single access point- GUI
- ❖ Neutral and secured info management & “routing”
- ❖ Customs added value service

Cooperation with Port /terminals' systems

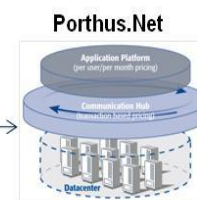


2. Single window for B2A(customs) interface (ICS SEAP)

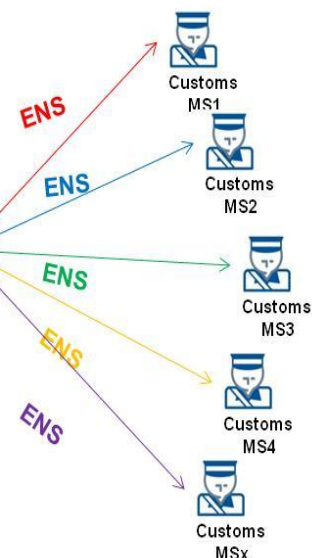
- ❖ Single message format
- ❖ MRN security status integration
- ❖ ENS container status linkage



1 ENS format



Exploited by DESCARTES with LSPs



3. Business added value services platform (VAS)

- ❖ Utility services
- ❖ VAS connectivity layer
- ❖ VAS Services for chain visibility
 - ❖ ETA calculations
 - ❖ Flags & Warnings
 - ❖ GEOFENE service for focused chain analysis



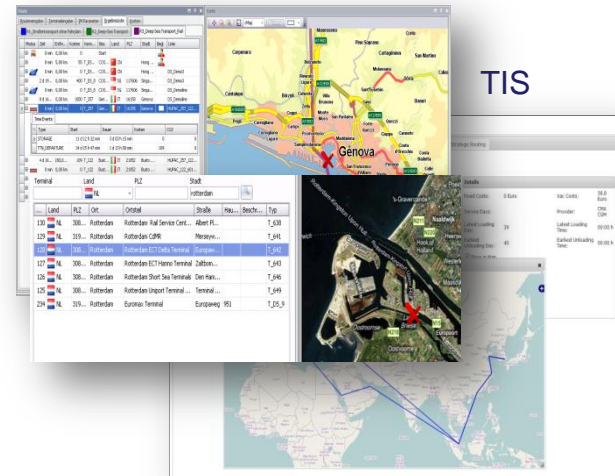
•Green ports & terminals
visibility tool: Greece-China cooperation progr.
•Med Intermodal Visibility platform – MED program

Intermodal re-routing

4. Advanced added value services (AVAS)

- ❖ Intermodal re-routing
- ❖ TIS :Transport Info Server
- ❖ Strategic routing

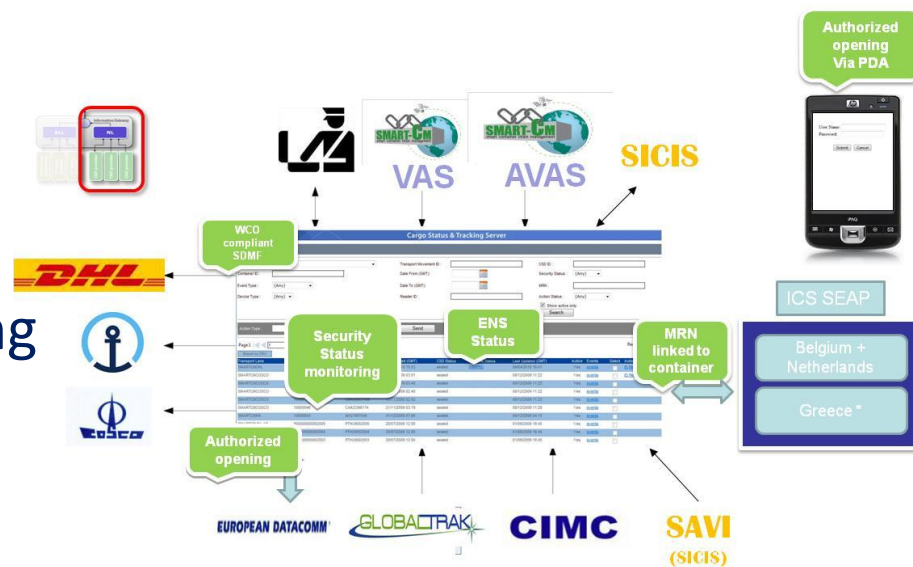
•Exploitation prospects
•Solid basis for i-cargo relevant service & TSD e-freight specification



1. Standards compliance & interoperability

- ❖ WCO compliant SDMF
- ❖ Container Authorized opening procedure

Input to CONTAIN



2. CEN WCA process

- ❖ CSDs standardisation
- ❖ Messages
- ❖ Middleware platforms

Common Framework reference model:

- *Logistics Supply*
- *Regulation – enforcement*
- *Security.....*

• Components of a Global Container Security System (GCSS)by CEN WSA SMART-CM_n0028

1. Transportation Conveyance
2. Container Security Device (CSD)
3. Long-Range Communications Networks
4. CSD System Processing Centres
5. The Internet
6. "Middleware Platforms" as Security Monitoring Data



Technology Agnostic Single Window Platform

Smart-CM making the world go around serving transport and customs.

Container Security Technology (CST):
active RFID / satellite comms multi-sensoric units

GREEN LANES

Shippers, Customs, Transport Operators, Terminal Operators, Logistics Providers

www.smart-cm.eu

Thank you!